

ANNUAL REPORT TO THE COMMUNITY

2018



MESSAGE FROM THE SUPERINTENDENT



Dear Citizens of Seminole County,

I am honored to serve Seminole County Public Schools (SCPS) as the district continues to be a premier national district and an “A-rated” Florida district. The School Board and I have worked tirelessly to provide quality programs and relevant 21st century curriculum to all the families in the district. High quality teachers, engaged students, and involved parents all contribute to our efforts to maintain high student achievement.

We’re excited to announce the launch of several brand-new programs for this 2018-2019 school year. The new Millennium Middle School Fine Arts & Performing Arts Magnet program has opened right next door to our School of the Arts Elementary Magnet, Midway Elementary. At the site of the old Millennium Middle School, our new Seminole High School 9th Grade Center-Edward Blacksheare Campus has opened. This new addition to Seminole High school provides more student access and increased capacity to

our district’s largest high school. We’ve also opened a state-of-the-art Career & Technical Education Building on Seminole High School’s main campus, which houses programs such as automotive, collision repair, and our newly created Aviation Program.

Thanks to a \$15 million Magnet Schools Assistance Program (MSAP) Grant, we have launched three new Magnet Elementary Schools. These include Idyllwilde Elementary Future Ready Academy, which includes the International Baccalaureate (IB) Primary Years Programme and College & Career Readiness; Pine Crest Elementary School of Innovation, which includes Computer Science/Code to the Future programs; and Wicklow Elementary School for Global Pathways, which includes the International Baccalaureate (IB) Primary Years Programme, Global Competency and World Language Acquisition.

SCPS believes that every student should have the option to create their own unique path to earn “One Year’s Growth, in One Year’s Time.” This commitment includes educational experiences that prepare students to be successful in college, careers, and citizenship. The SCPS ePathways initiative, which is entering its sixth year, seeks to develop customized learning environments that meet the unique, individualized needs of each student. Through innovations such as flexible scheduling, student internships, blended learning, and career-focused programs, ePathways is an important part of our pledge that graduates of our PK-12 system will be ready for the challenges of a constantly changing workforce.

With more than 67,000 students in our district, I am proud of the growth we’ve achieved and the accomplishments we’ve accumulated over the past year. The continuous support from our teachers, parents, administration, and community is what makes being a part of Seminole County so rewarding.

Walt Griffin, Ed.D.
Superintendent

MEET THE SCHOOL BOARD



Karen Almond
School Board Member

With a heart for serving this community, Karen has been a community and education advocate for more than 22 years and was first elected to the School Board in 2010. She has dedicated thousands of volunteer hours within the school system, the City of Casselberry, Seminole County, and grassroots political campaigns - helping to elect others who serve and support the needs and best interests of our students and community.



Tina Calderone, Ed.D.
School Board Member

Tina Calderone has been a lifelong public school advocate and was first elected to the School Board in 2010. She and her husband have been residents of Seminole County since 1989 and both of their children have graduated from SCPS. Tina is a proven community leader and volunteer as is evidenced by her membership in all of Seminole County's Chambers of Commerce and has served on the boards of the Greater Seminole County Chamber of Commerce, School Readiness Coalition and Seminole County Library Advisory Board.



Kristine Kraus
School Board Member

Kristine Kraus is the mother of four children, all of whom graduated from Seminole County Public Schools. She previously was a YMCA Preschool Programs teacher for 18 years. In addition, Kristine has been an active volunteer with the district for more than 20 years, attending Seminole County School Board meetings and volunteering with Rainbow Elementary to support implementation of the i-Ready program for kindergarteners. Kristine has assisted in event planning, teacher appreciation activities, yearbook, field trips, and more!



Amy Pennock
School Board Member

Amy Pennock, a mom and a community leader, has a long career of working with community organizations and businesses to improve their finances. As the owner of Pennock Consulting Group, Amy works for companies across the country, providing outsourced Chief Financial Officer services. She is devoted to supporting and improving the Seminole County community. Amy has served on boards of directors and volunteered for more than a dozen non-profit agencies. She currently is the president-elect for Florida Executive Women and serves on the board of Goodwill of Central Florida, Lake Mary Park & Recreation Advisory Board and the Seminole County Regional Chamber of Commerce.



Abby Sanchez
School Board Member

Abby has been a resident of Central Florida since 1999. She has 26 years of experience teaching elementary age children. She was the recipient of the "Beginner Teacher of the Year" in Tallahassee in 1992. Abby is currently an active member of the Seminole Chamber of Commerce, Sanford Chamber of Commerce, Oviedo/Casselberry Chamber of Commerce, Altamonte Chamber of Commerce, League of Women Voters, Junior League, Delta Kappa Gamma-Beta Chi (Women's Educator's Society), Seminole Education Association and the Seminole Republican Executive Committee.

2017-2018 FSA/EOC RANKING

Seminole County Public Schools ranked 1st or 2nd in Central Florida out of the 17 largest districts in nearly all subject areas and grade levels on FSA ELA, Math, the statewide Science assessment and End-of-Course Exams

Subject	Grade	Central Florida	17 Largest Districts
ELA	3rd Grade	1	1
	4th Grade	1	1
	5th Grade	1	1
	6th Grade	2	2+
	7th Grade	1+	1+
	8th Grade	2	2+
	9th Grade	1+	1+
	10th Grade	2	2
Math	3rd Grade	1	1
	4th Grade	1	1
	5th Grade	1	2+
	6th Grade	2	3
	7th Grade	1+	3+
	8th Grade	1	5
Science	5th Grade	1	1
	8th Grade	2	2
End of Course Exams			
Alegbra I	All Grades	1	2
Geometry	All Grades	2	3
Biology	All Grades	1	1+
Civics	All Grades	2	5+
US History	All Grades	1	1

STUDENT ASSIGNMENT & PROGRAM ACCESS

3,253
students

School Transfers

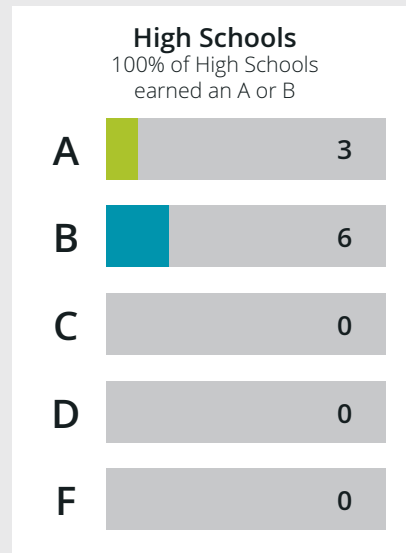
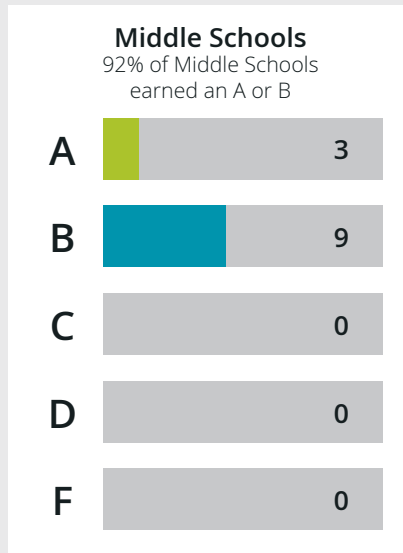
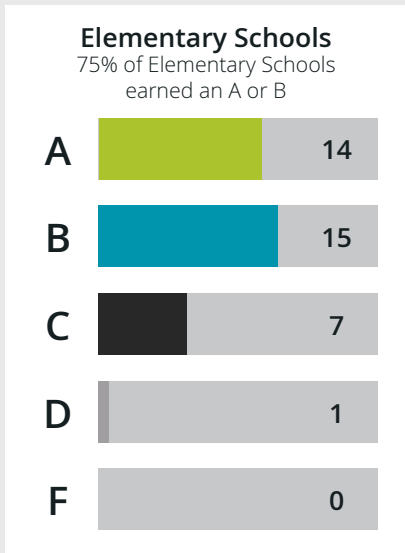
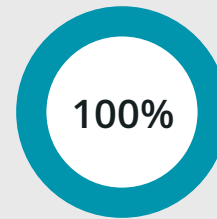
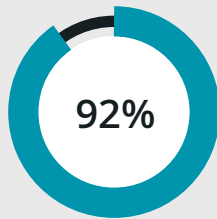
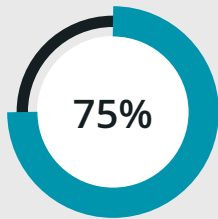
Total number of student tranfers granted for the 2017-2018 school year

2,571
students

Magnet School Transfers

Total number of students placed in magnet schools for the 2017-2018 school year

2017-2018 SCHOOL GRADES



COMMUNITY SUPPORT



Business Partners - 950 partners

Total number of local businesses registered as official partners with SCPS.



PTA Membership - 15,815 people

Total number of PTA members registered in the district.



Dividends - 36,579 people

Total number of parent and community volunteers registered in the district.

EDUCATIONAL PATHWAYS EPATHWAYS INITIATIVE

For more information on ePathways options, visit our website: www.scps.k12.fl.us/epathways or send an email to ePathways@scps.us or contact your child's school counselor.

Seminole County Public Schools is implementing its ePathways initiative to develop personalized learning environments that meet the unique, individualized needs of each student. ePathways reflects our school district's commitment to the families, communities and employers in Seminole County that graduates of our PreK-12 system will be ready for the challenges that await them in our democratic society and dynamic economy. Some students will wish to prepare for a university education in an academic, STEM or arts field, while others will choose to pursue technical training that leads to industry certification or mastery of career-ready skills. SCPS embraces multiple pathways for student success—our goal is to provide a world-class education for all students! This commitment includes rigorous programs for high school students as well as opportunities for elementary and middle school students to explore careers, identify their interests and pursue their passions.

Seminole County Public Schools also recognizes that today's students learn in different ways, at different rates and on different schedules. ePathways embraces innovative educational models including flexible scheduling, blended learning and virtual education. Our schools now offer the flexibility to accommodate today's students and families through a variety of choice programs that include magnet schools and programs of emphasis. Virtual educational programs are available for students in grades K-12 as either a full-time school option or on a part-time basis to create a blended schedule of traditional and online courses. High school students can also access after-school career courses in fields such as aerospace, automotive, cosmetology, culinary, interior design, robotics and technical design.



PROGRAMS OF EMPHASIS

For more information about Programs of Emphasis, visit: www.scps.k12.fl.us/epathways and for additional information on transfer options, visit: www.seminoleschoolchoices.us

SCPS is dedicated to the preparation of students for the workplace and the innovation economy. Each high school in the district provides unique opportunities that are relevant for a career in today's job market. These Programs of Emphasis are designed to prepare students to be both college and career ready.

Students must be zoned for the school or eligible for an approved transfer in order to attend. Industry certifications and dual enrollment credit may be earned through successful completion of coursework and testing.



HAGERTY HIGH ✓ MODELING, SIMULATION & ANALYSIS

The Modeling, Simulation and Analysis Program teaches students the fundamentals of modeling and simulation, a high-demand, high-wage industry in Central Florida.



LAKE BRANTLEY HIGH ✓ FINANCE ACADEMY

The Finance Academy Program offers a curriculum comprised of finance and business technology including accounting applications and personal financial planning.



LAKE HOWELL HIGH ✓ CULINARY ARTS

The Culinary Arts Program allows students to explore all facets of the culinary field, including entrepreneurship, in an industry-standard commercial kitchen.



LAKE HOWELL HIGH ✓ CYBERSECURITY

The Cybersecurity Program introduces and prepares students for careers in computer science and cyber-defense in multiple industries.



LAKE HOWELL HIGH → ENTREPRENEURSHIP

The Entrepreneurship Program curriculum introduces the broad spectrum of business, industry, and small business initiatives.



LAKE MARY HIGH ✓ ADVANCED MANUFACTURING

The Advanced Manufacturing program gives students the opportunity to design and prototype innovative products using high-tech, industry standard equipment.



LAKE MARY HIGH → FORENSIC SCIENCE & LEGAL STUDIES

This program includes two tracks: Forensic Science uses groundbreaking modern scientific technology in crime scene investigation and Legal Studies teaches the foundations of our legal system.



LYMAN HIGH → TEACHING, LEARNING & LEADERSHIP

The Teaching, Learning & Leadership Program empowers students to embrace their potential future as educators and fosters their knowledge of the education profession.



OVIEDO HIGH ✓ BIOSCIENCE TECHNOLOGY

The Bioscience Technology Program provides preparation for the career fields of applied biology in industry, medicine, and agriculture.



WINTER SPRINGS HIGH RENEWABLE ENERGY

The Renewable Energy Program allows students to study energy technologies and the advantages, disadvantages, and limitations of renewable energy resources for a sustainable future.

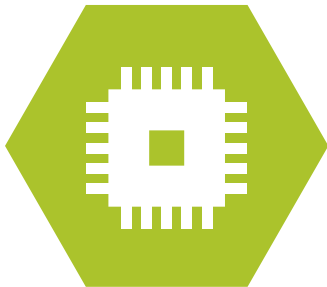
- ✓ Program includes industry certification.
- Program includes dual enrollment opportunities

HIGH SCHOOL MAGNET SCHOOLS & PROGRAMS

SCPS is dedicated to the preparation of students for the workplace and the innovation economy. Each high school in the district provides unique opportunities for career pathways that are relevant for a career pathway in today's job market and economy. These programs are designed to meet the requirements of higher education and the workplace, leading to students who are both college and career ready.

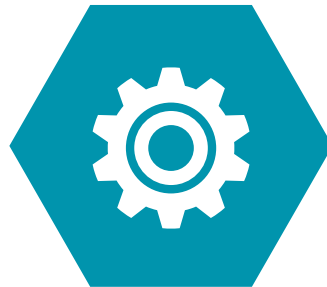
A Magnet School or Magnet Program has a singular theme or focus, providing unique opportunities for in-depth experience and studies in a specific area of interest. Admission to a Magnet School or Magnet Program is open to all students who are residents of Seminole County by application only.

Additional information may be found at: www.seminoleschoolchoices.us



CROOMS ACADEMY INFORMATION TECHNOLOGY

Seminole County's only district-wide magnet high school. Crooms AOIT provides cutting edge innovation in teaching and learning through a technology-enriched environment. Students at Crooms engage in a rigorous and relevant curriculum that prepares them for post-secondary education with industry-validated technology skills.



LYMAN HIGH INSTITUTE FOR ENGINEERING

This program utilizes Project Lead the Way (PLTW) to provide a nationally recognized curriculum that is highly creative, technology rich and emphasizes college preparatory skills. Students are exposed to an integrated curriculum infused with rigorous and relevant industry innovations and technology. This world-class program is designed for any student interested in pursuing a career in engineering.



LAKE HOWELL HIGH CYBERSECURITY

The cybersecurity program introduces students to a multifaceted curriculum that will teach them the foundational knowledge and skills needed in computer and network security, attack mechanisms and techniques, intrusion detection and prevention. This unique program is designed to prepare students for careers in computer science and cyber defense.



SEMINOLE HIGH ACADEMY OF HEALTH CAREERS

A comprehensive, rigorous academic program of college preparation and uniquely relevant curriculum for students who plan to pursue a career as a health care professional. Hands-on learning opportunities enable students to preview various health care careers through job shadowing and clinical experiences in area hospitals, clinics, and medical and veterinary offices.



SEMINOLE & WINTER SPRINGS HIGH INTERNATIONAL BACCALAUREATE

An internationally recognized, rigorous pre-university course of study that incorporates an extensive liberal arts curriculum containing humanities, social studies, world languages, mathematics, and science. The IB Diploma Program, affiliated with the International Baccalaureate Organization, is designed for highly motivated college-bound students seeking educational challenges. The curriculum is based on international standards and examinations that are evaluated by international educators.

MIDDLE SCHOOL MAGNET SCHOOLS & PROGRAMS

Four Seminole County Public Schools (SCPS) magnet middle schools offer students learning opportunities that take them beyond traditional instructional experiences. Students may also enroll in the SCPS Pre-IB Preparatory Program which offers an extensive course of study in math, science, world language, social studies and language arts—with an emphasis on independent study, in-depth learning and accelerated curriculum requirements. All middle school students residing in Seminole County are eligible to apply to a middle school magnet school. Assignment for out-of-zone students is by application only. Additional information may be found at:

www.seminoleschoolchoices.us



MILLENNIUM MIDDLE FINE ARTS AND COMMUNICATION

The Fine Arts and Communication Program at Millennium Middle School is designed to serve the academic and creative needs of every student. A stellar academic core curriculum is enriched with instruction in visual and performing arts. Incorporating the arts into the curriculum helps to improve academic performance and enhance inquiry, critical thinking and problem-solving skills. Students have the opportunity to explore, discover, and unleash their individual potential and achieve academic excellence.



MILWEE MIDDLE PRE-ENGINEERING

Milwee Middle School utilizes the Gateway to Technology program through Project Lead the Way (PLTW) to provide a nationally recognized curriculum that is a highly creative, technology rich, and emphasizes college preparatory skills. Students are exposed to an integrated curriculum infused with rigorous and relevant industry innovations and technology. This world-class program is designed for any student interested in pursuing a potential career in engineering.



SANFORD MIDDLE MATH, SCIENCE & TECHNOLOGY

This magnet school focuses on math, science, and technology. Its labs and classrooms offer opportunities for discovery and exploration. Throughout the school, subjects are studied in depth, and the curriculum puts each student at the center of learning. The intensive academic program, coupled with extracurricular and co-curricular opportunities, proves a wonderful vehicle to teach and develop the skills necessary to succeed—not only in school, but also in life.

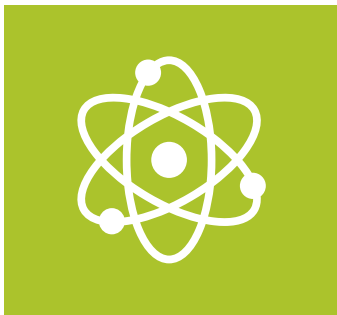


SOUTH SEMINOLE ACADEMY LEADERSHIP, LAW AND ADVANCED STUDIES

This magnet school empowers students to use their voices, take charge of their daily actions, and prepares them for success in high school and beyond. South Seminole offers more than 35 Leadership Academies, Financial Literacy, Legal Studies, World Language Immersion, and Pre-International Baccalaureate (IB) Preparatory Programs.

ELEMENTARY SCHOOL MAGNET SCHOOLS & PROGRAMS

All elementary students residing in Seminole County are eligible to apply to an elementary magnet school. Assignment is by application only. Students are assigned based on seat availability through a random-selection process. Additional information may be found at: www.seminoleschoolchoices.us



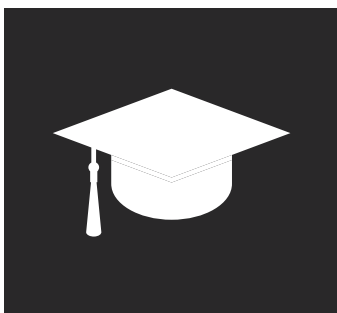
GOLDSBORO ELEMENTARY **MATH, SCIENCE & TECHNOLOGY**

This magnet school emphasizes math, science, and technology and is home to the Kids Space Center. The natural connection between math, science, and technology is enhanced through a strong literacy program that aligns with district and state standards. A scientifically research-based reading program forms the foundation for this rich curriculum that builds a balanced learning environment. Writing and social studies skills are developed along with the magnet focus on math, science, and technology. Students are provided opportunities to explore their talents and strengths in music, art, and physical education.



HAMILTON ELEMENTARY **SCHOOL OF ENGINEERING & TECHNOLOGY**

This district-wide magnet program specifically focuses on the field of Educational Robotics and features state-of-the-art Robotics labs. Utilizing an interdisciplinary approach, students will engage in learning that is infused with Science, Technology, Engineering and Mathematics (STEM) as the primary vehicle.



IDYLLWILDE ELEMENTARY **FUTURE READY ACADEMY**

This innovative magnet school prepares students to thrive in an interconnected global society. The Future Ready Academy is founded on the idea that students need to begin developing skills and passions as early as elementary school to prepare themselves to prosper in the future. Through concept-based curriculum and transdisciplinary learning, students address the Florida state standards and topics in meaningful ways that challenge them to apply their learning to real world problems.



MIDWAY ELEMENTARY
SCHOOL OF THE ARTS

This magnet school offers an arts infused core curriculum and performing arts instruction that develops talents including ballet, dance, band, orchestra, vocal music, and art. Whether they're learning mathematical principles by studying an Alexander Calder mobile, understanding sound waves by exploring different percussion instruments or delivering the news from "virtual" locations designed in the digital graphics lab, students at Midway Elementary School of the Arts are learning the art of excellence both on stage and in the classroom.



PINE CREST ELEMENTARY
MAGNET SCHOOL OF INNOVATION

This magnet school engages students in a digitally-rich environment that embeds computer science and coding across the curriculum. Unique and personalized challenges inspire learners to seek out diverse ways of thinking as they model and explore creative ways of solving issues using cutting-edge technology. From "debugging" a dance to writing music code, our fresh, forward-thinking approach cultivates a new generation of systems thinkers who are excited about learning and prepared to meet the educational and social challenges of school today and of the global workplace tomorrow.



WICKLOW ELEMENTARY
MAGNET SCHOOL FOR GLOBAL PATHWAYS

This magnet school promotes students to become globally-minded citizens equipped with the strategies, knowledge, and skills needed to pursue excellence in our modern society. Our learners explore and connect first-hand with cultures of the world through language immersion, partnerships, and state-of-the-art technology. Students listen, speak, read, and write in two languages; achieve academic excellence through an international approach; and develop cultural awareness and sensitivity.

TAX DOLLARS AT WORK

Planning, Design, and Construction is well underway for numerous campus upgrades to fully support healthy and safe learning environments for the students of Seminole County.

PROJECTS UNDER CONSTRUCTION

Lake Brantley High School's New Building 5, Auditorium & Dining Renovation

New Two Story, 64,000 Square Foot Structure to house 935 Students

New Fire Alarm System, HVAC Controls, and Fiber/Data Backbone Campus Wide

New Auditorium Roof, Seating, Theatrical Lighting, Sound, Staging, and Video System

Revised Backstage and Lobby Circulation and Finishes

Increase Kitchen/Prep Area, New Walk-In Coolers/Freezers, Upgraded Finishes in Dining Area and at Serving Lines

Districtwide Roofing Projects

Carillon Elementary School

Woodlands Elementary School

Geneva Elementary School Parent Drive/Ramp

Lyman High School Stadium and Track Improvements

Districtwide Playground Upgrades



TAX DOLLARS AT WORK

PROJECTS UNDER DESIGN

Pine Crest School of Innovation Campus Upgrade

New Single Building configuration housing PK-5th Grade Classrooms, Administration, Dining & Media Center

Capacity to house 900+ Students

Focus on Innovative Instruction and Learning

Added Focus on Computer Coding and Magnet School Assistance Program Grant

Construction Commencing Summer of 2019 with Completion 2020-21 School Year

Middle School STEM Labs

Classroom Enhancements at 11 Middle School Campuses

Unique Designs to Support School's Program Emphasis

Interactive Presentation Displays & Collaborative Workstations

Project Programming

Lyman High School Career Education Building

Stenstrom Elementary School Intermediate Learning Center

Crooms Academy of information Technology Gymnasium Building

Districtwide Roofing Projects

Winter Springs High School

Greenwood Lakes Middle School

Lake Brantley High School

Heathrow Elementary School

Sanford Middle School

COMPLETED PROJECTS

Renovation of Old Millennium Middle to Seminole HS Ninth Grade Center (Ed Blacksheare Campus)

New Intermediate Learning Center (ILC) at Midway Elementary School

New Seminole High School Career Education Building (Aviation, Building Trades & Automotive Programs)

New Millennium Middle School Campus





CLASS OF 2018

VALEDICTORIANS



Rachel Pleitez Duran
Crooms AOIT



Jonathon Paul Sepulveda
Hagerty High



Terri Tran
Lake Brantley High



Mary Isabelle Guerra-Issa
Lake Howell High



Macy Somoskey
Lake Mary High



Nikhil Deshmukh
Lake Mary High | Salutatorian



Erica Hetrick
Lyman High



Sapna Patel
Oviedo High



Isabel Adamus
Seminole High



Ryan Lam
Seminole High



Cristalle Choi
Seminole High



Chaerin Woo
Winter Springs High

2018



SEMINOLE COUNTY
PUBLIC SCHOOLS

2017-2018 ANNUAL REPORT

This publication is provided to inform Seminole County taxpayers about public schools.

For more information, please contact:

Office of Communications
Seminole County Public Schools
400 East Lake Mary Blvd.
Sanford, Florida 32773
Phone: 407-320-0184

www.scps.us



@SCPSINFO



/SEMINOLECOUNTYSCHOOLS

SCPS EDUCATIONAL EQUITY - NOTICE OF NONDISCRIMINATION

The Educational Equity Administrator for Seminole County Public Schools has the responsibility of assuring compliance with the educational equity requirements by providing technical expertise, monitoring activities or programs related to compliance, and responding to equity complaints. One of the responsibilities is to administer the Educational Equity Complaint/Grievance Procedures as adopted by the School Board. It is the policy of the School Board of Seminole County, Florida, that no employee, student, or applicant shall - on the basis of race, color, national origin, sex, disability, marital status, age, religion, or any other basis prohibited by law - be excluded from participating in, be denied the benefits of, or be subjected to discrimination and harassment under any educational programs, activities, or any employment conditions, policies, or practices conducted by the District. Additionally, the School board of Seminole County provides equal access to public school facilities for the Boy Scouts of America and other designated youth groups as required by 34 C.F.R. 108.6.

Every employee, student, or applicant for employment at Seminole County Public Schools has a solemn right to be treated fairly, equally, equitably, and with dignity. If for any reason you - the employee, student, or applicant for employment - find that you have been victimized by acts of discrimination and or harassment, whether intentional or unintentional, you are strongly encouraged to file an Educational Equity Complaint or Grievance with the Educational Equity Administrator, or any county or school-level administrator. All such complaints must be immediately forwarded to the Educational Equity Administrator for dissemination, action, and resolution. Forward to: SCPS Educational Equity Administrator, Seminole County Public Schools, Educational Support Center, 400 E. Lake Mary Blvd., Sanford, FL 32773-7127. (407) 320-0198.